

Gas station pharmacology

Commonly Used Drugs in the Gray Zone of Legality and Safety

J. Luke Engertser, MD, DFAPA, DFASAM
President
Alabama Society of Addiction Medicine
Residency Program Director, Psychiatry
Fellowship Program Director, Addiction Medicine
Associate Professor
USACOM, Department of Psychiatry
Deputy Chief Medical Officer
AllaPointe Health



Disclosure

I have no conflicts of interest to report and I intend to reference unlabeled/unapproved uses of drugs and products in my presentation.



What is a "gas station drug"?

Legal ambiguity

Addictive potential

No FDA oversight

Common gas station drugs

Tianeptine (Tianaa, Za Za)	Kratom	Delta-8-thc, delta-10-thc	Synthetic cannabinoids/spice
Phenibut	Bath salts	Cold/flu medicines	Sexual enhancers

Opioid-like



Kratom

- Mu-opioid partial agonist
- Use for self-withdrawal management
- Southeast Asia - thang, kakuam, thom, ketum, and biak

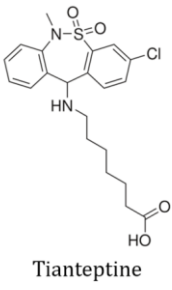


Trakulsricha S, Sathirakul K, Auparakkitamon S, et al. Pharmacokinetics of mitragynine in man. Drug Des Devel Ther. 2015;9:2421-2429. Published 2015 Apr 29. doi:10.2147/DDDT.779658

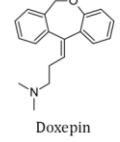
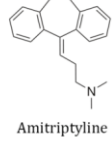
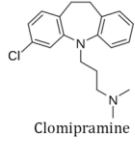
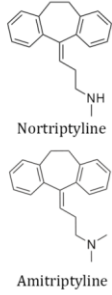
Tianeptine

- Structurally similar to tricyclics
- Mu-Opioid partial agonist
- Withdrawal syndrome





Typical TCAs



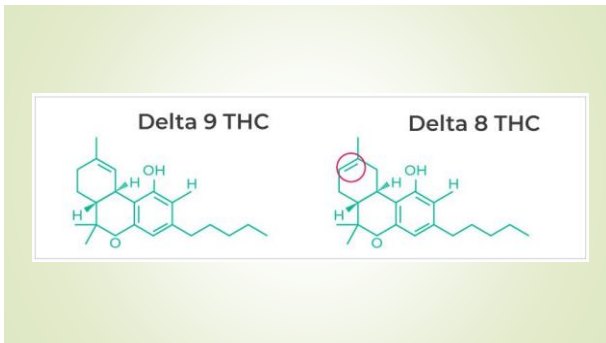
Loperamide

- Peripheral mu-opioid agonist
- Crosses blood brain barrier at high dose



Cannabis-like





Synthetic cannabinoids/Mojo



Common brands:
Spice
K2
Scooby snax
Ninja
Yucatan
many others

- PSYCHOTROPIC
- VAPING
- CHEMICAL VARIATION



Sedative/hypnotic-like

phenibut



- Gaba-B agonist and gabapentinoid
- "nootropic"



COMMON BRANDS:
SLEEP WALKER
RED DAWN
ANVIFEN
FENIBUT
NOOFEN
LIFTMODE

Kava

- From Piper methisticum shrub
- Potentates gaba-a receptor



Amanita muscaria



- AKA Fly agaric and fly aminita



Alcohol



Stimulant-like

Synthetic cathinones (Bath salts)

- Khat plant
- Psychotogenic
- Excited delirium



Caffeine/energy drinks

- 85% of us population consumes daily
- Safe amount- up to 400mg
- Tolerance varies



Pseudoephedrine

- Stimulates alpha and beta adrenergic receptors



Nicotine



PCP/ketamine-like

OTC cough


- Dextromethorphan (DXM)
- NMDA antagonist
- Street names: CCC, Dex, DXM, Poor Man's PCP, Robo, Rojo, Skittles, Triple C, Velvet







Nitrous oxide

LSD-like



Salvia
Divinorum



Other

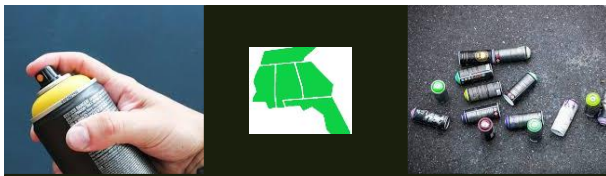
Sexual enhancement

- Royal Honey
- Rhino products




Diphenhydramine





Hydrocarbons "Chroming"




Amyl Nitrites "Poppers"





BUG SPRAY
Paper route, wasping, KD, Katie, zombie



Questions?
